

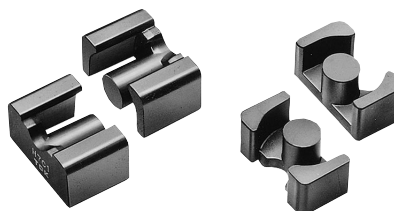
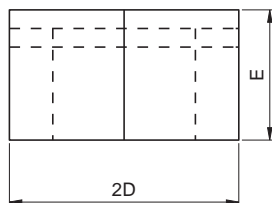
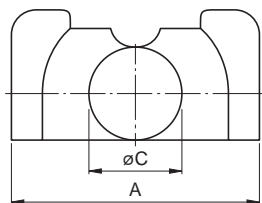
Ferrite Cores

For Power Supply

LP Cores

LP Series

CORE SHAPES AND DIMENSIONS/CHARACTERISTICS



DE.DES.19,581
 EP.PAT.68,745(DE.FR.GB.NL)
 FR.DES.201,586
 GB.DES.1,007,200
 JP.U.M PRO.PUB 82(57)-201,824
 JP.DES.630,754
 NL.DES.9,767
 US.PAT.4,424,504
 US.DES.280,810

Type	Dimensions (mm)				Ae (mm ²)	le (mm)	Weight (g)
	A	øC	2D	E			
LP23/8	16.5±0.3	5.7±0.1	23.4±0.2	8.7±0.2	31.3	44.1	9.6
LP22/13	25±0.4	8.6±0.2	22.4±0.2	12.9±0.3	67.9	49	21
LP32/13	25±0.4	8.6±0.2	31.8±0.2	12.9±0.3	70.3	64	30

ELECTRICAL CHARACTERISTICS

WITHOUT AIR GAP

Part No.	AL-value (nH/N ²) [1kHz, 0.5mA, 100Ts]	Calculated output power* (W) [100kHz]
PC44LP23/8Z-12	1600±25%	50
PC44LP22/13Z-12	3310±25%	121
PC44LP32/13Z-12	2630±25%	164

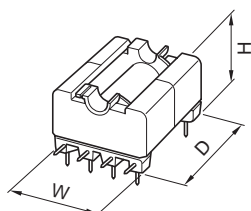
*The values were obtained with forward converter mode.

WITH AIR GAP

Part No.	AL-value (nH/N ²) [1kHz, 0.5mA, 100Ts]
PC44LP23/8AXXX*-22	63±5%, 100±7%, 250±13%
PC44LP22/13AXXX-22	100±5%, 200±7%, 400±10%
PC44LP32/13AXXX-22	100±5%, 200±7%, 400±10%

*XXX: AL-value

BOBBINS



Part No.	No. of pin terminal	Dimensions (mm)			Clamp
		W	D	H	
BLP23/8-018P*1	8	17.2	34.2	12.7	FLP23/8-A
BLP22/13-1110CPL*2	10	25.9	32.3	19.2	FLP22/13-A
BLP32/13-1110CPL*2	10	25.9	40.6	19.2	FLP32/13-A

•Material: FR phenol, UL Grade: 94V-0

Pin material: *1Phosphor bronze (Solder plated) *2Steel wire (Solder plated)

