

LIFESEP™ 50SX

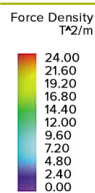
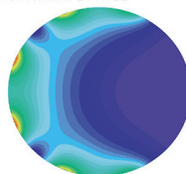
BIOMAGNETIC SEPARATOR DEVICE FOR 50ML TUBES

Dexter's patented SX series of magnetic separators for single tubes are durable and easy-to-use. For use in cell sorting, RNA and DNA isolation and purification of biomolecules, these separation devices offer fast and easy aspiration in part because of our innovative Neodymium-Iron-Boron (Nd-Fe-B) magnet configuration.

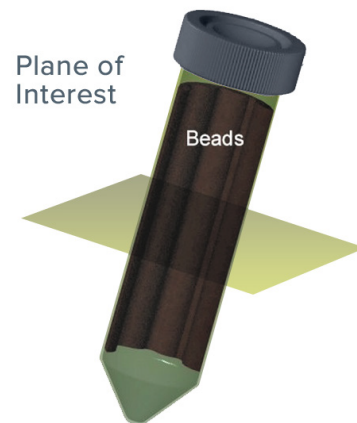
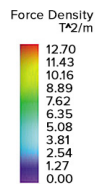
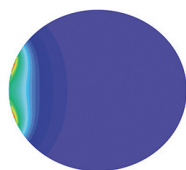
By placing the tube in to the separator, our unique magnet configuration quickly draws superparamagnetic particles away from the solution. Once separation is complete, and with the particles held firmly to the wall and off the bottom of the tube, the supernatant can be removed. Our LifeSep™ technology is simple and easy to use with the most established protocols.

Force Density Plot of LifeSep 50SX

Part Number 2501022



vs. Conventional 50mL Single Magnet Separator



LIFESEP™ 50SX BENEFITS AT A GLANCE:

- + Patented Nd-Fe-B magnet configuration for optimal results
- + Open-faced design for clear visibility
- + Rapid separation of micro- and nanometer beads
- + Easy aspiration
- + Superior particle retention
- + Removable base for easy cleaning
- + Durable and easy to use

Call Now to Order

(847) 956-1140

or order online dextermag.com



DEXTER MAGNETIC TECHNOLOGY

1050 Morse Avenue Elk Grove Village, IL 60007

dextermag.com (847) 956-1140

LIFESEP™ 50SX Product Characteristics

PART NO.	VOLUME	VESSEL DIAMETER (MM)	HEIGHT (MM)	WIDTH (MM)	DEPTH (MM)	WEIGHT (KG)	NALGENE NUNC BOTTLE	DOW CORNING TUBE
2501022	50 ML	28.8	120	88	71	2.14	-	430828 OR 430829

CARE:

The LifeSep™ 50SX can be cleaned with mild detergent but should not be submerged in aqueous solutions

CAUTION - STRONG MAGNETIC FIELD:

Separators should be handled with care and stored at a safe distance from magnetic media including computer hard drives, disks and credit cards.

For more handling information, visit our website.

ABOUT LIFESEP™

Dexter Magnetic Technologies is the premier provider of biomagnetic separation devices with its patented LifeSep™ technology. In the most demanding process requirements, from nano-sized particle capture to continuous flow separation, we supply the technology for increased productivity.

Our technical focus enables us to understand protocols and bead separation systems. For new and existing products, we can collaborate on methods to improve rate of magnetic separation, improve wall retention, reduce cycle times and maximize yield. From single tube devices to tray units and automated solutions, we are your source for magnet expertise in separators.

SAFETY GUIDELINES FOR LIFESEP™ SX ASSEMBLIES

The LifeSep™ 50SX device achieves fast separation of magnetic particles through the use of powerful permanent magnets. These magnets use strong magnetic fields with very high gradients. Although the device has been designed to focus the strongest magnetic field within the separation cavity, some magnetic field will inevitably leak outside the separation cavity. Therefore, extreme precaution should be taken when handling or otherwise being in close proximity to the LifeSep™ 50SX device because of the following risks:

- The device poses a health and safety risk to people with pacemakers, implantable cardioverter defibrillators, and other non-static (actively operating) implanted medical devices because they may interfere with the operation of those devices and/or cause them to malfunction, possibly resulting in injury or death. Steel implants, such as hip or knee joint replacements, can strongly attract or be attracted by the device.
- The device poses a safety risk when handling it because it can pinch fingers, hands, or other body parts that get between the magnet and another magnet or between the magnet and metal, possibly resulting in injury.
- The device poses a safety risk because it strongly attracts steel and other materials containing iron and nickel, such as tools, lab instruments, and personal items such as key chains and belt buckles. These items can be pulled forcefully to the device and can cause injury to someone holding the device or to someone who is near the device. Also, objects pulled to the device can injure the device itself.
- The device poses a risk of damage to electronic equipment, such as displays and monitors, damage to or disruption of data stored on magnetic media, such as hard drives and credit cards, and damage to magnetic recording devices. The device can also damage delicate instruments and watches.

WARNING: Because of these risks,

- No one with pacemakers, implantable cardioverter defibrillators, or other non-static (actively operating) implanted medical devices should handle or be near the LifeSep™ 50SX device
- No one with steel implants, such as hip or knee joint replacement implants, should permit the device to be near the implant
- All loose ferrous objects should be mechanically restrained to prevent being pulled into the device
- Remove watches and remove jewelry containing iron, steel, or nickel before handling or being near the device
- Remove all credit cards from the vicinity of the device
- Remove all electronic equipment and magnetic storage devices or media from the vicinity of the device
- Avoid having a hand or fingers between the device and any material containing iron, steel, or nickel

The Health and Safety officer should take all steps necessary or appropriate to ensure that these precautions are followed to avoid personal injury or property damage.

