

Ferrite Cores for EMI Suppression For Round Cable

RU Series(Separated Cylindrical)

FEATURES

- For use with round cables. Both the clamp-on type and the regular type cores are available. Clamp-on cores can be attached to an existing cable while avoiding removal or cutting of the cable.

APPLICATIONS

Imaging devices, audio equipment, automotive electronics, telecommunication devices, office automation equipment, and digital interface various other cables.

- Absorption EMI and penetrating noise
- Prevent parasitic oscillation

SHAPES AND DIMENSIONS/CHARACTERISTICS

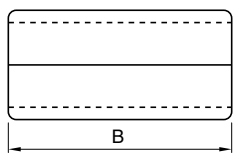


Fig.1

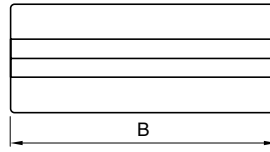
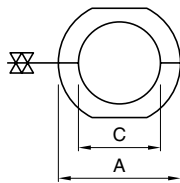
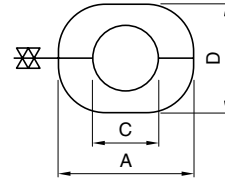


Fig.2



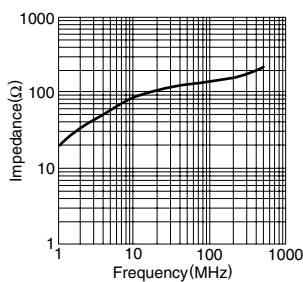
Part No.	Dimensions(mm)				Impedance Z (Ω)[at 23°C]		Fig.
	A	B	C	D	10MHz typ.	100MHz typ.	
HF70RU10X20X5S	10	20	5	9	81	145	Fig.2
HF70RU12X15X7.3S	12	15	7.3	—	31	82	Fig.1
HF70RU13X22X7S	13	22	7	12	81	144	Fig.2
HF70RU16X28X9S	16	28	9	—	78	170	Fig.1
HF70RU17X28X11S	17	28	11	16	77	141	Fig.2
HF70RU20X29X13S	20	29	13	19	83	148	Fig.2
HF70RU26X29X13S	26	29	13	—	120	245	Fig.1

* The RU core is delivered 2 pieces/set. It is possible to offer in single unit.

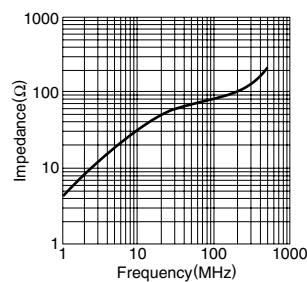
TYPICAL ELECTRICAL CHARACTERISTICS

IMPEDANCE vs. FREQUENCY CHARACTERISTICS

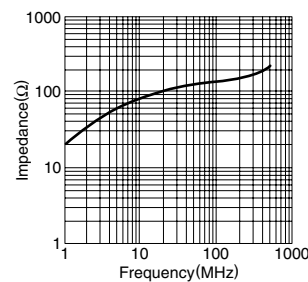
HF70RU10X20X5S



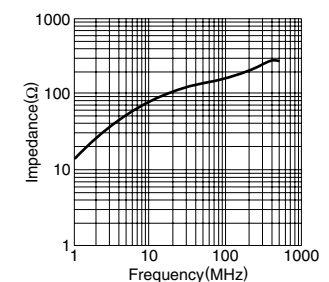
HF70RU12X15X7.3S



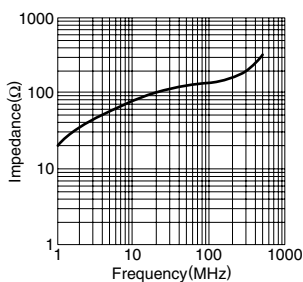
HF70RU13X22X7S



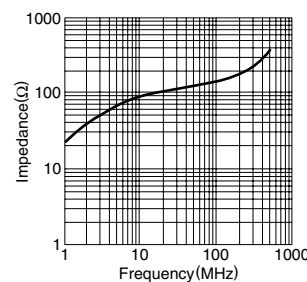
HF70RU16X28X9S



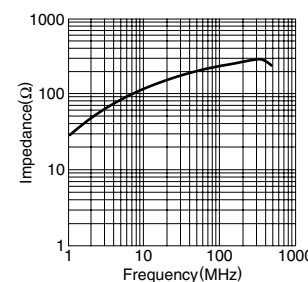
HF70RU17X28X11S



HF70RU20X29X13S



HF70RU26X29X13S



• All specifications are subject to change without notice.